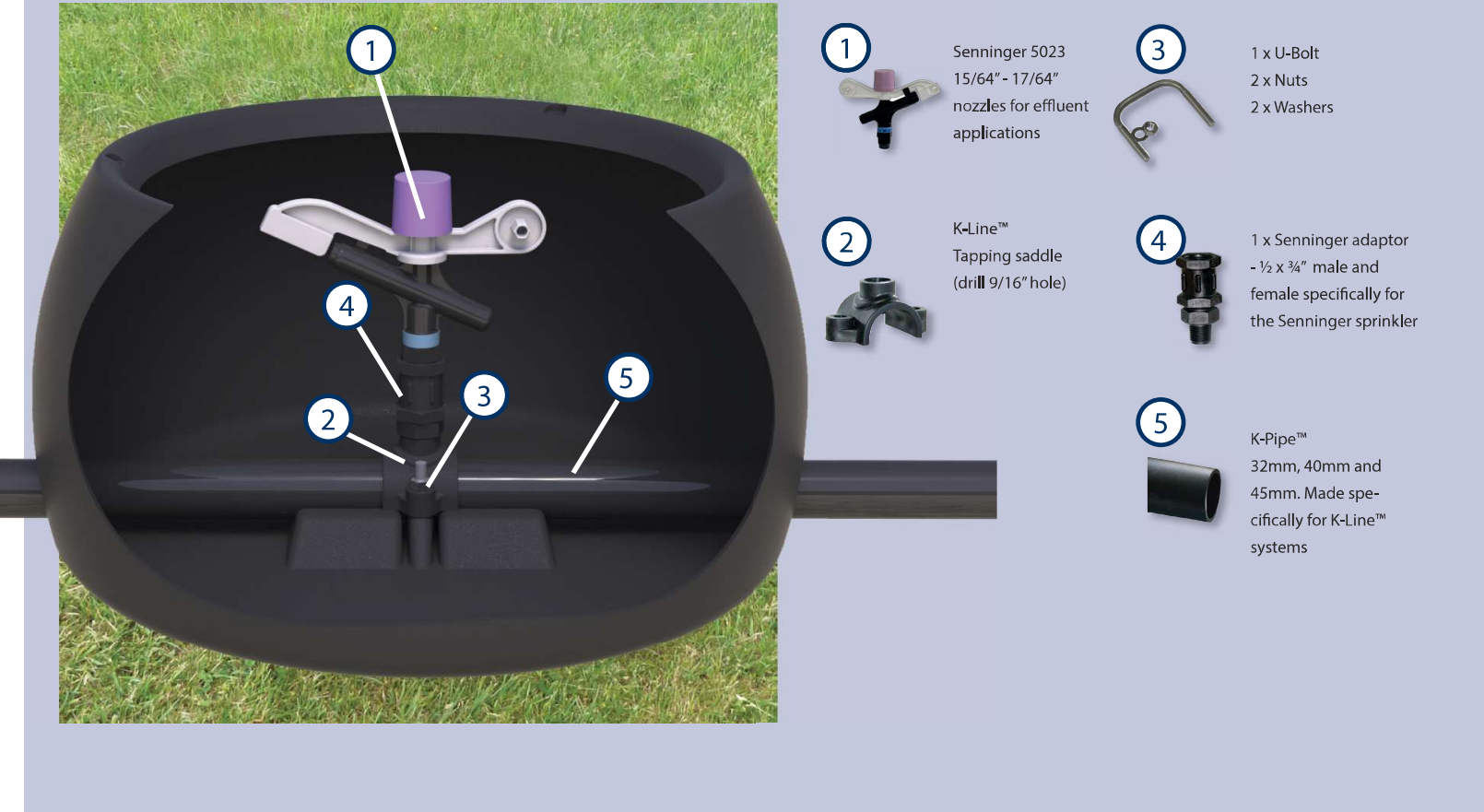


K-Line™ Mid Effluent components



- 1** Senninger 5023 15/64" - 17/64" nozzles for effluent applications
- 2** K-Line™ Tapping saddle (drill 9/16" hole)
- 3** 1 x U-Bolt
2 x Nuts
2 x Washers
- 4** 1 x Senninger adaptor - 1/2 x 3/4" male and female specifically for the Senninger sprinkler
- 5** K-Pipe™ 32mm, 40mm and 45mm. Made specifically for K-Line™ systems



Figure 2. Pressure and flows of the Senninger 5023

Pressure (PSI)	40	45	50
#15 Nozzle (15/64")			
(gpm)	9.8	10.4	11
Diameter (ft)	96	98	100
#16 Nozzle (1/4")			
(gpm)	11.1	11.8	12.4
Diameter (ft)	97	99	101
#17 Nozzle (17/64")			
(gpm)	12.3	13.1	13.8
Diameter (ft)	98	100	102

System components

- The K-Line™ Mid pod comes complete with the sprinkler, riser assembly and saddle to connect your K-Pipe™ to the pod
- K-Line™ provides a complete series of K-Pipe™ solutions

Spacing and pipe system

- Special 32, 40, and 45mm K-Pipe™ is available to complete your new K-Line™ Mid effluent pods. The K-Pipe™ is simply threaded through the K-Line™ pod, then with a 9/16" drill and 13mm socket you are able to assemble your system. The special K-Pipe™ is designed to be flexible but highly resilient to stresses of the shifting process

Selection criteria for your K-Line™ Mid system

Selection of a suitable K-Line™ pod and a successful installation is very much dependent on the degree of separation of the solids from the liquids.

For the K-Line™ Mid Effluent pod, the nozzle selection is 1/4" and the separation of the solids would need to be better than .2".

The K-Line™ Mid requires a two pond storage system, or better separation, for successful application.



		Requirements		Benefits			
		Minimum Filtration	Palatability	Distribution	Application Rate	Nutrient Management	
<p>K-Line™ Std Naan 5022 9" x 15"</p>  <p>The K-Line™ Standard has a Naan 5022 sprinkler with a 5/32" nozzle and requires the best liquid quality.</p>	 Weeping wall or  Solid Separator &  Storage	Optimum	Optimum	Optimum	Optimum	Optimum	
<p>K-Line™ Mid Senninger 5023 11" x 22"</p>  <p>The K-Line™ Mid has a Senninger 5023 sprinkler and a nozzle up to 1/4", therefore it can handle poorer liquid quality.</p>	 Two Pond Storage 	Optimum	Optimum	Optimum	Optimum	Excellent	
<p>K-Line™ Max⁷⁰ Senninger 7025 18" x 32"</p>  <p>The K-Line™ Max⁷⁰ has a Senninger 7025 sprinkler and a nozzle up to 3/8". It can therefore handle poorer liquid quality.</p>	 Single Pond Storage	Medium	Excellent	Optimum	Good		
<p>K-Line™ Max⁸⁰ Senninger 8025 18" x 32"</p>  <p>The K-Line™ Max⁸⁰ has a Senninger 8025 sprinkler and a nozzle up to 5/8". It can therefore handle the lowest liquid quality.</p>	 Pumping Sump with Stone Trap	Satisfactory	Excellent	Optimum	Okay		

K-Line Irrigation N.A.
4270 Hollywood Rd
St Joseph, MI 49085
Toll Free 866-665-5463
www.k-lina.com